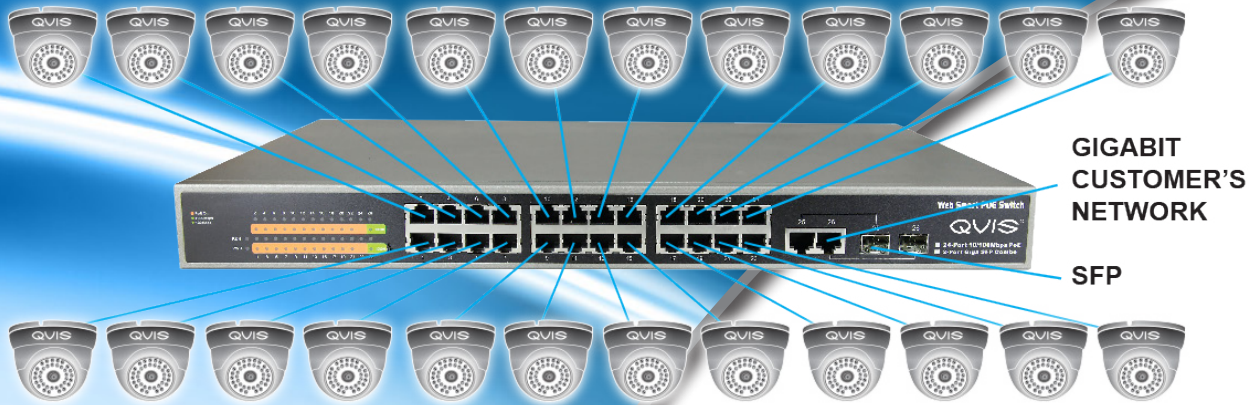


# POE-ML24

## MANAGED SMART POE SWITCH



### Features:

- Up to 30W of Power
- Complies to IEEE 802.3at PoE standard and is backward
- Compatible with All IEEE 802.3at or Legacy
- Safe: Low power devices receive only the power they need
- Safe and Reliable Power to WLAN Access Points
- Supports 10/100 Base-T applications
- Compact Design Fits Easily in WLAN Access
- Plug-and-Play no configuration required
- Internal power supply

SPECIFICATION	POE-ML24
10/100Mbps Copper Ports	24Ports: 10/ 100Base-TX RJ-45 Auto-MDI/MDI-X ports
1000Mbps Copper Ports	2 10/100/1000Mbps RJ-45 Auto-MDI/MDI-X ports
SFP/mini-GBIC Slots	2 1000Base-SX/LX, shared with Port-25~Port-26
Switch Architecture	Store-and-Forward
Switch Fabric	8.8Gbps / non-blocking
Switch Throughput	6.547Mpps @64Bytes
Address Table	8K entries
Share Data Buffer	512Kbytes
Maximum Frame Size	9K Bytes
Flow Control	Back pressure for Half-Duplex IEEE 802.3x Pause Frame for Full-Duplex
LED	Power, FAN Alarm Link/Activity (Green) PoE In-Use (Amber) 1000 LNK / ACT (Green) 10/100 LNK / ACT(Green)
Reset Button	< 5 sec: System reboot > 5 sec: Factory Default
Dimension (WxDxH)/Weight	440 x 280 x 44 mm, 1U height, 4 kg
Power Requirement	100~240V AC, 50-60 Hz
Power Consumption	250 Watts maximum
PoE Standard	IEEE 802.3af/at Power over Ethernet / PSE
PoE Power Output	Per Port 54V DC, 350mA~560mA. Max. 15.4~30 Watts
Power Pin Assignment	1/2(+), 3/6(-), Mode-A
PoE Power Supply Type	End-Span
PoE Power Budget	370 Watts maximum

# POE-ML24

## MANAGED SMART POE SWITCH

SPECIFICATION CONTIN....	POE-ML24
Management Interface	Console, Telnet, Web Browser, SSL, SNMPv1, v2c
Port Configuration	Port disable/enable Auto-negotiation 10/100/1000Mbps full and half duplex mode selection Flow Control disable / enable
VLAN	IEEE 802.1Q Tag-based VLAN Port-based VLAN Q-in-Q tunneling Up to 255 VLANs groups, out of 4041 VLAN IDs
Bandwidth Control	Ingress / Egress Rate Control Allow to configure per 128Kbps
Link Aggregation	Static Port Trunk IEEE 802.3ad LACP (Link Aggregation Control Protocol) Supports 13 groups of 8-Port trunk support
Quality of Service	Traffic classification based on : -Port priority -802.1p priority -DSCP/TOS field in IP Packet
IGMP Snooping	IGMP (v1/v2) Snooping, up to 256 multicast Groups IGMP Querier support
Port Mirror	RX / TX / Both 1-to-1 mirroring
Security	IEEE 802.1x Port-Based Network access control Port Security Static MAC MAC Filtering MAC / IP Binding
Access Control List	IP-Based Layer 3 / Layer 4 ACL Up to 220 ACL rule entries
SNMP MIBs	RFC-1213 MIB-II RFC-2863 Interface MIB RFC-2665 EtherLike MIB RFC-1493 Bridge MIB RFC-2819 RMON MIB (Group 1, 2, 3,9) RFC-2737 Entity MIB POWER-ETHERNET-MIB
LED	Power, FAN Alarm Link/Activity (Green) PoE In-Use (Amber) 1000 LNK / ACT (Green) 10/100 LNK / ACT(Green)
Regulation Compliance	FCC Part 15 Class A, CE
Standards Compliance	IEEE 802.3: 10Base-T IEEE 802.3u: 100Base-TX IEEE 802.3z: 1000Base- SX/L IEEE 802.3ab: 1000Base-T IEEE 802.3x: Flow Control IEEE 802.3ad: Port trunk with LACP IEEE 802.1D: Spanning tree protocol IEEE 802.1w: Rapid spanning tree protocol IEEE 802.1p: Class of service IEEE 802.1Q: VLAN Tagging IEEE 802.1x: Port Authentication Network Control IEEE 802.3af: Power over Ethernet IEEE 802.3at: Power over Ethernet
Operating	Temperature: 0 ~ 50 Degree C Relative Humidity: 20 ~ 95%
Storage	Temperature: -10 ~ 70 Degree C Relative Humidity: 20 ~ 95% (non-condensing)